



Online store [WWW.LYNXGEAR.LV](http://WWW.LYNXGEAR.LV)  
Company: SIA LATLYNX  
info@lynxgear.lv, +371 26159668  
Reg. No. 45403038162, VAT Reg. No.  
LV45403038162,  
Legal address: Baznicas iela 8,  
Aizkraukle, Aizkraukles novads,  
LV-5101, LATVIJA  
Bank Account: LV87UNLA0050021387494  
AS SEB Bank, SWIFT: UNLALV2X

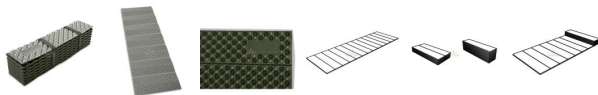
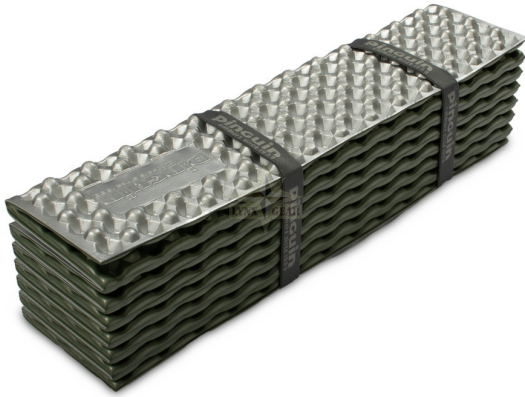
## ORDER CONFIRMATION

Not Rated Yet

Sales price 49,95 €

Salesprice with discount

Incl. VAT 21%: 8,67 €



Type	Foldable foam mattress
Material	IXPE foam with aluminium reflective layer
Dimensions (unfolded)	186 × 56 × 2 cm
Packed size	53 × 13.5 × 13 cm
Weight	approx. 430-470 g
Estimated R-value	2
Shape	Rectangle
Carry system	Elastic drawstring bands

### FAQ

**Which side should face up (when sleeping)?** should face up to reflect body heat back toward you.

**Is this mattress suitable for (winter use)?** For winter conditions, it can be combined with another insulating pad or sleeping system.

**Can it be damaged by sparks or sharp objects?** cracks, or burns from embers do not affect its insulating performance.

**Does the mattress absorb water?** and moisture-resistant, making it suitable for damp ground.

**Is it easy to transport?** and can be clipped to the outside of a backpack



Online store [WWW.LYNXGEAR.LV](http://WWW.LYNXGEAR.LV)  
Company: SIA LATLYNX  
info@lynxgear.lv, +371 26159668  
Reg. No. 45403038162, VAT Reg. No.  
LV45403038162,  
Legal address: Baznicas iela 8,  
Aizkraukle, Aizkraukles novads,  
LV-5101, LATVIJA  
Bank Account: LV87UNLA0050021387494  
AS SEB Bank, SWIFT: UNLALV2X

---

## ORDER CONFIRMATION

---

using the included elastic bands.

### Glossary

- **IXPE:** Radiation cross-linked polyethylene foam known for durability, insulation, and low water absorption
- **R-value:** Measure of thermal resistance; higher values indicate better insulation
- **Reflective layer:** Aluminium coating that reflects radiant body heat back toward the user
- **Foam mattress:** Non-inflatable sleeping pad providing insulation and cushioning

### Manufacturer / GPSR Information

#### PINGUIN

Běloveská 187  
547 01 Náchod  
Czech Republic

Customer service (service & spare parts): This email address is being protected from spambots. You need JavaScript enabled to view it.

```
document.getElementById('cloak4d1ccf15eb12ae1dd2b8ff698965e813').innerHTML = ''; var prefix = 'ma' + 'il' + 'to'; var path = 'hr' + 'ef' + '='; var addy4d1ccf15eb12ae1dd2b8ff698965e813 = 'servis' + '@'; addy4d1ccf15eb12ae1dd2b8ff698965e813 = addy4d1ccf15eb12ae1dd2b8ff698965e813 + 'activent365' + '.' + 'com'; var addy_text4d1ccf15eb12ae1dd2b8ff698965e813 = 'servis' + '@' + 'activent365' + '.' + 'com'; document.getElementById('cloak4d1ccf15eb12ae1dd2b8ff698965e813').innerHTML += '+addy\_text4d1ccf15eb12ae1dd2b8ff698965e813+';
```

Specifications may change without notice as part of continuous product development.